

experience
more
together

Global.cfmoto.com

ZHEJIANG CFMOTO POWER CO.,LTD.

NO.116,Wuzhou Road,Yuhang Economic Development Zone
Hangzhou 311100,Zhejiang Province.

Tel:86-571-89265799

Facebook:CFMOTO_Official

Instagram:cfmoto_world

YouTube:CFMOTO



Photos are for illustrative purposes only. Specs to change without notice. Subject to material object. Details in store.



experience
more
together

CFORCE 625/ 625 TOURING

P 09 — P 12

ACCESSORIES

CFORCE 450 S/L & 520 S/L
CFORCE 400/ 400 TOURING
CFORCE 500/ 500 TOURING

P 01 — P 08



CFORCE 850 XC & 1000

P 13 — P 20

CFORCE

UNIVERSAL

P 21 — P 22



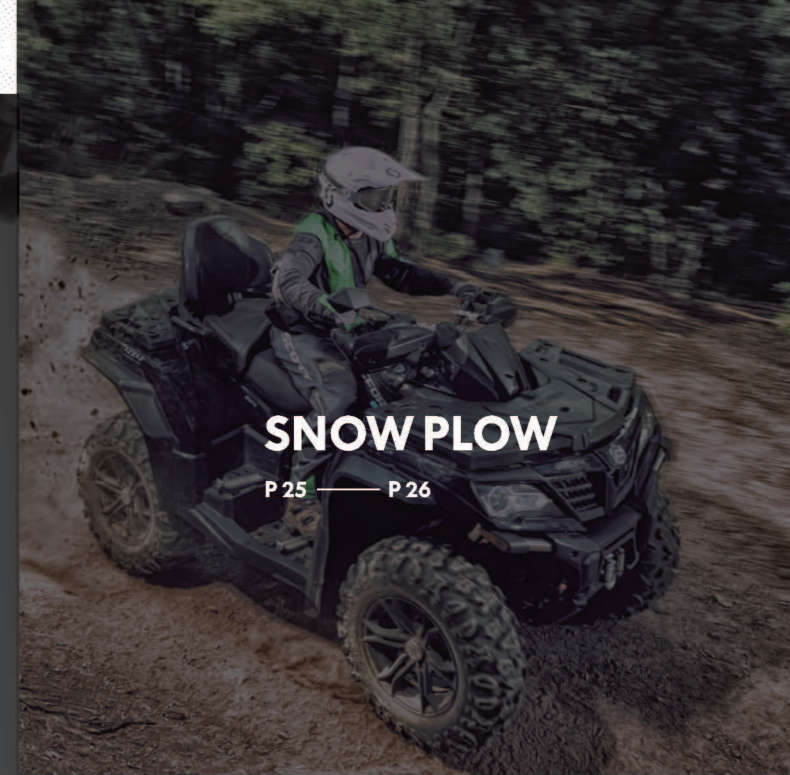
TOWING

P 23 — P 24



SNOW PLOW

P 25 — P 26



CFMOTO POWER

P 27 — P 28



CFORCE

450 S/L & 520 S/L



Front Bumper Assembly

Accessory Code: 9GQ0-200300

Features:

- Steel Tube diameter 35mm & wall thickness 2mm
- Durable, E-coated with black powder coat
- Easy to install
- Provides front protection of vehicle
- Headlight protection
- Anti-corrosion coating with durable coat finish
- Works with winch system



Rear Bumper Assembly

Accessory Code: 9GQ0-200400

Features:

- Steel Tube diameter 35mm & wall thickness 2mm
- Durable, E-coated with black powder coat
- Easy to install
- Provides rear protection of vehicle
- Taillight protection
- Anti-corrosion coating with durable coat finish
- Works hitch system



Nerf Bars Assembly - 1UP

Accessory Code: 9GQ0-200500

Features:

- Steel Tube wall thickness 2mm
- Durable, E-coated with black powder coat
- Easy to install
- Provides side protection of vehicle
- Anti-corrosion coating with durable coat finish



Nerf Bars Assembly - 2UP

Accessory Code: 9GQL-200500

Features:

- Steel Tube wall thickness 2mm
- Durable, E-coated with black powder coat
- Easy to install
- Provides side protection of vehicle
- Anti-corrosion coating with durable coat finish



Front Rack Extender Assembly

Accessory Code: 9CR6-200600

Features:

- Integrated front rack extender
- Steel Tube Diameter: $\varnothing 22\text{mm}$
- Durable, E-coated with black powder coat
- Easy to install
- Helps keep cargo securely in place



Rear Rack Extender Assembly

Accessory Code: 9CR6-200700

Features:

- Integrated rear rack extender
- Steel Tube Diameter: $\varnothing 22\text{mm}$
- Durable, E-coated with black powder coat
- Easy to install
- Helps keep cargo securely in place



Aluminum Skid Plate Assembly - 1UP

Accessory Code: 9GQ0-203000

Features:

- Made of high strength aluminum (thickness 3mm)
- Ultimate durability
- High impact strength
- Offering great protection in rough terrain



Aluminum Skid Plate Assembly - 2UP

Accessory Code: 9GQL-203000

Features:

- Made of high strength aluminum (thickness 3mm)
- Ultimate durability
- High impact strength
- Offering great protection in rough terrain





CFORCE 450 S/L & 520 S/L

Hand Guard Kit

Accessory Code: 9AW#-804700-2000

Features:

- Protect driver's hands
- Hard plastic cover and plastic bracket
- Fit on CFORCE 450 S/L / COFRCE 520 S/L perfectly



Aluminum Winch Armor Assembly

Accessory Code: 9GQ0-200600

Features:

- Made of high strength aluminum (thickness 3mm)
- Ultimate durability
- High impact strength
- Offering great protection for winch



A-arm protector assembly

Accessory Code: 9GQ0-204000

Features:

- Made of high strength aluminum (thickness 3mm)
- Ultimate durability
- High impact strength
- Offering great protection for A-arms in rough terrain



Front Cargo Box Assembly

Accessory Code: 9GQ0-806100-1500

Features:

- Large storage capacity (13.2 Gallons, 50 Liters)
- Closing system with two lockable latches
- Reflectors on both sides of cargo box
- Water sealed to keep your things dry
- Strong and durable, does not crack, warp or dent



Rear Cargo Box Assembly

Accessory Code: 9GQ0-806200-1500

Features:

- Large storage capacity (26.4 Gallons, 100 Liters)
- Closing system with one lockable latch
- With reflectors, driving more safety
- Water sealed to keep your things dry
- Strong and durable, does not crack, warp or dent



Seat Cover – 1UP

Accessory Code: 85214B-00001

Features:

- Fit on CFORCE 450 S and CFORCE 520 S perfectly
- Prevent the seat from dirt and dust
- Canvas Material



CFORCE 450 S/L & 520 S/L



Front Bumper Assembly

Accessory Code: 9DQV-801100-3000

Features:

- Steel Tube diameter 32mm & wall thickness 2mm
- Durable, E-coated with black powder coat
- Provides headlight protection and front protection of vehicle
- Perfectly fits on CFORCE 400 / 400 TOURING & 500 / 500 TOURING, easy to install
- Works with CFMOTO winch system and plow system



Rear Bumper Assembly

Accessory Code: 9DQV-801300-3000

Features:

- Steel Tube diameter 32mm & wall thickness 2mm
- Durable, E-coated with black powder coat
- Provides taillight protection and rear protection of vehicle
- Perfectly fits on CFORCE 400 / 400 TOURING & 500 / 500 TOURING, easy to install
- Works CFMOTO hitch system



Front Rack Extender Assembly

Accessory Code: 9DQV-802200-3000

Features:

- Steel Tube Diameter: φ22mm
- Durable, E-coated with black powder coat
- Perfectly fits on CFORCE 400 / 400 TOURING, easy to install
- Helps keep cargo securely in place



Rear Rack Extender Assembly

Accessory Code: 9DQV-802300-3000

Features:

- Steel Tube Diameter: φ22mm
- Durable, E-coated with black powder coat
- Perfectly fits on CFORCE 400 / 400 TOURING, easy to instal
- Helps keep cargo securely in place



Rack Extender Assembly

Accessory Code: 9DRV-802400-3000

Features:

- Steel Tube Diameter: φ22mm
- Durable, E-coated with black powder coat
- Perfectly fits on CFORCE 500 / 500 TOURING, easy to install
- Helps keep cargo securely in place
- This extender can fit on both of front rack and rear rack



Front Basket Assembly

Accessory Code: 9DQV-802100-3000

Features:

- Perfectly fit on CFORCE 400 / 400 TOURING & 500 / 500 Touring
- Large storage capacity can take 3 open face helmets
- Have 7 rope holes/handgrip holes on the basket
- Stylish look, Heavy duty plastic
- With CF Connect, Easy to install and remove, Tool-less
- Work with CFMOTO Tool Holder, can take more tools
- Need to order 4 CFConnect seats (9DQV-809100-3000) with the front basket for CFORCE 400 / 400 Touring



CFORCE

400 / 400 TOURING & 500 / 500 TOURING



Cargo Box Assembly (plastic latch)

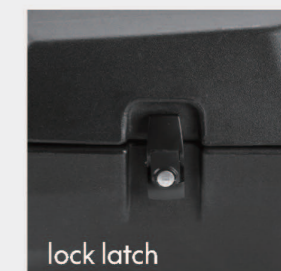
Accessory Code: 9DQV-806100-3001

Cargo Box Assembly (lock latch)

Accessory Code: 9DQV-806100-3002

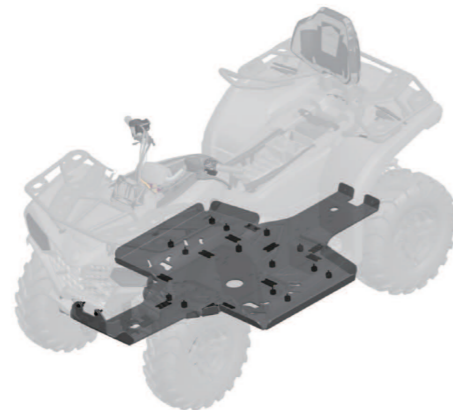
Features:

- Large storage capacity (26 Gallons, 100 Liters) can take 3 open face helmets
- Lockable lid, Stylish look, Heavy duty plastic
- With CF Connect, Easy to install and un-install, Tool-less
- No mounting holes inside of the cargo box, a perfect Water tight seal



HDPE Skid Plate Assembly – 1UP

Accessory Code: 9DQV-804100-3000



HDPE Skid Plate Assembly – 2UP

Accessory Code: 9CQV-804200-3000

Features:

- Made of high density polyethylene HDPE (thickness 8mm)
- Ultimate durability
- Offering great protection in rough terrain
- Perfectly fit on CFORCE 400 / 400 Touring & CFORCE 500 / 500 Touring

Front Windshield Assembly

Accessory Code: 9DQV-805100-3000

Features:

- Made of impact-resistant Acrylic
- Stable, quiet at low speed riding condition
- Excellent visibility, UV and weather endurance with no yellowing
- Driver wind protection
- Easy to install



400 / 400 TOURING & 500 / 500 TOURING



Fender Flares Assembly

Accessory Code: 9DQV-803100-3000

Features:

- Made of high strength polyethylene (thickness 2.5mm) for abrasion resistance
- Ultimate durability
- Integrated extended fender flares for full body protection from dirt and water



Hand Guard Kit (New Royal Blue)

Accessory Code: 9DRV-804500-3000

Hand Guard Kit (Camo)

Accessory Code: 9DRV-804600-3000

Hand Guard Kit (Red)

Accessory Code: 9DRV-804700-3000

Hand Guard Kit (Orange)

Accessory Code: 9DRV-804800-3000

Features:

- Protect driver's hands
- Hard plastic cover and plastic bracket
- Fit on CFORCE 400 / 400 Touring & CFORCE 500 / 500 Touring



Front Bumper Assembly

Accessory Code: 9DS#-801100-6000

Features:

- Steel Tube diameter 38mm & wall thickness 2mm
- Durable, E-coated with black powder coat
- Easy to install
- Provides front protection of vehicle
- Headlight protection
- Works with winch system and plow system



Rear Bumper Assembly

Accessory Code: 9DS#-801200-6000

Features:

- Steel Tube diameter 38mm & wall thickness 2mm
- Durable, E-coated with black powder coat
- Easy to install
- Provides rear protection of vehicle
- Taillight protection
- Works hitch system



Front Windshield Assembly

Accessory Code: 9DS#-805000-6000

Features:

- Made of impact-resistant Acrylic
- Stable, quiet at low speed riding condition
- UV and weather endurance with no yellowing
- Driver wind protection
- Excellent visibility
- Easy to install



CFORCE 625 & 625 Touring



Front Bumper Assembly – light protection

Accessory Code: 9DS#-801400-6000

Features:

- Steel Tube diameter 32mm & wall thickness 2mm
- Durable, E-coated with black powder coat
- Easy to install
- Provides front protection of vehicle
- Headlight protection
- Works with winch system and plow system



Rear Bumper Assembly – light protection

Accessory Code: 9DS#-801300-6000

Features:

- Steel Tube diameter 32mm & wall thickness 2mm
- Durable, E-coated with black powder coat
- Easy to install
- Provides rear protection of vehicle
- Taillight protection
- Works hitch system



Front Rack Extender Assembly - one piece

Accessory Code: 9DS#-802300-6000

Rear Rack Extender Assembly - one piece

Accessory Code: 9DS#-802400-6000

Features:

- Integrated rack extender
- Steel Tube Diameter: $\varnothing 22\text{mm}$
- Durable, E-coated with black powder coat
- Easy to install
- Helps keep cargo securely in place

**Front Rack Extender Assembly - separated**

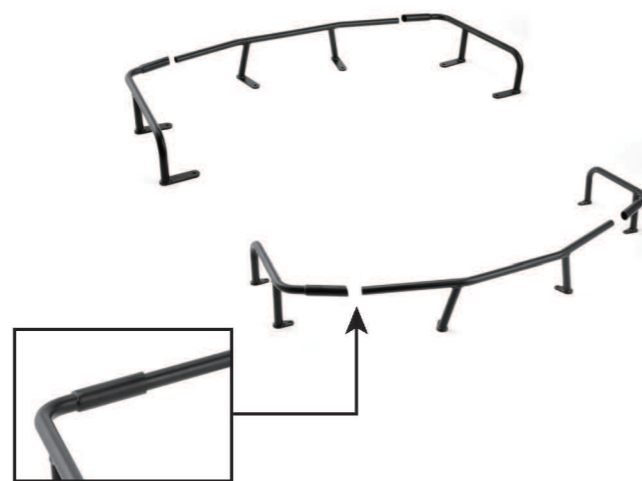
Accessory Code: 9DS#-802100-6000

Rear Rack Extender Assembly - separated

Accessory Code: 9DS#-802200-6000

Features:

- Steel Tube Diameter: $\varnothing 22\text{mm}$
- Durable, E-coated with black powder coat
- Easy to install
- Helps keep cargo securely in place
- Small carton package save the freight cost

**HDPE Skid Plate Assembly - 2UP**

Accessory Code: 9CSV-805200-6400

HDPE Skid Plate Assembly - 1UP

Accessory Code: 9DSV-805300-6000

Features:

- Made of high density polyethylene HDPE (thickness 8mm)
- Ultimate durability
- High impact strength
- Offering great protection in rough terrain

**Aluminum Skid Plate Assembly - 2UP**

Accessory Code: 9CS#-804200-6400

Aluminum Skid Plate Assembly - 1UP

Accessory Code: 9DS#-804300-6000

Features:

- Made of high strength aluminum (thickness 5mm)
- Ultimate durability
- High impact strength
- Offering great protection in rough terrain



CFORCE

625 & 625 Touring

Front Basket Assembly

Accessory Code: 9DSV-802100-6000

Features:

- Perfectly fit on CFORCE 625 and CFORCE 625 Touring
- Large storage capacity can take 3 open face helmets
- Have 9 rope holes/handgrip holes on the basket
- Stylish look, Heavy duty plastic
- With CF Connect, Easy to install and remove, Tool-less
- Work with CFMOTO Tool Holder, can take more tools



Cargo Box Assembly (plastic latch)

Accessory Code: 9DSV-806100-6001

Cargo Box Assembly (lock latch)

Accessory Code: 9DSV-806100-6002

Features:

- Large storage capacity (24 Gallons, 90 Liters) can take 2 open face helmets and 1 full face helmet
- Lockable lid, Stylish look, Heavy duty plastic
- With CF Connect, Easy to install and un-install, Tool-less
- No mounting holes inside of the cargo box, a perfect Water tight seal



Cargo Box Assembly (plastic latch)

Accessory Code: 9DSV-806100-6003

Cargo Box Assembly (lock latch)

Accessory Code: 9DSV-806100-6004

Features:

- Large storage capacity (24 Gallons, 90 Liters) can take 2 open face helmets and 1 full face helmet
- Lockable lid, Stylish look, Heavy duty plastic
- With CF Connect, Easy to install and un-install, Tool-less
- No mounting holes inside of the cargo box, a perfect Water tight seal



CFORCE

850 XC & 1000



Front Windshield Assembly

Accessory Code: 9AW#-806000-2100

Features:

- Made of impact-resistant Acrylic
- Stable, quiet at low/speed riding condition
- UV and weather endurance with no yellowing
- Driver wind protection
- Excellent visibility
- Easy to install



Front Bumper Assembly – Overland

Accessory Code: 9AW#-801100-2000

Features:

- Steel Tube diameter 38mm & wall thickness 2mm
- Durable, E-coated with black powder coat
- Easy to install
- Provides front protection of vehicle
- Headlight protection
- Anti-corrosion coating with durable coat finish
- Works with winch system and plow system



Rear Bumper Assembly – Overland

Accessory Code: 9AW#-801200-2000

Features:

- Steel Tube diameter 38mm & wall thickness 2mm
- Durable, E-coated with black powder coat
- Easy to install
- Provides rear protection of vehicle
- Taillight protection
- Anti-corrosion coating with durable coat finish
- Works hitch system



Front Rack Extender Assembly

Accessory Code: 9AW#-802300-2000

Rear Rack Extender Assembly

Accessory Code: 9AW#-802400-2000

Features:

- Integrated rear rack extender
- Steel Tube Diameter: φ22mm
- Durable, E-coated with black powder coat
- Easy to install
- Helps keep cargo securely in place



Front Bumper Assembly – Light Protection

Accessory Code: 9AWA-800100

Features:

- Steel Tube diameter 35mm & wall thickness 2mm
- Durable, E-coated with black powder coat
- Easy to install
- Provides front protection of vehicle
- Headlight protection
- Anti-corrosion coating with durable coat finish
- Works with winch system and plow system



Rear Bumper Assembly – light protection

Accessory Code: 9AWA-800200

Features:

- Steel Tube diameter 35mm & wall thickness 2mm
- Durable, E-coated with black powder coat
- Easy to install
- Provides rear protection of vehicle
- Taillight protection
- Anti-corrosion coating with durable coat finish
- Works hitch system



CFORCE 850XC & 1000

Nerf Bars Assembly

Accessory Code: 9AWA-800300

Features:

- Steel Tube diameter 30mm & wall thickness 2mm
- Durable, E-coated with black powder coat
- Easy to install
- Provides side protection of vehicle
- Anti-corrosion coating with durable coat finish

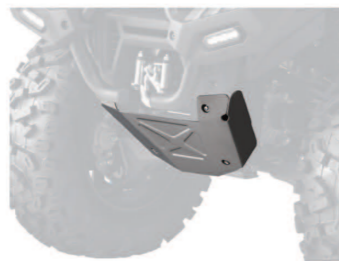


Aluminum Winch Armor Assembly

Accessory Code: 9AWA-800400

Features:

- Made of high strength aluminum (thickness 3mm)
- Ultimate durability
- High impact strength
- Offering great protection for winch

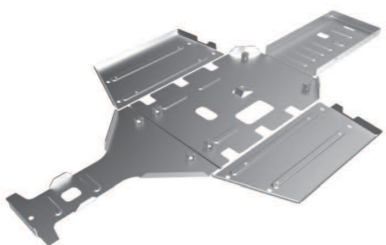


Aluminum Skid Plate Assembly

Accessory Code: 9AWA-800500

Features:

- Made of high strength aluminum (thickness 3mm)
- Ultimate durability
- High impact strength
- Offering great protection in rough terrain



CFORCE

850 XC & 1000



A-arm Protector Assembly

Accessory Code: 9AWA-800600

Features:

- Made of high strength aluminum (thickness 3mm)
- Ultimate durability
- High impact strength
- Offering great protection for A-arms in rough terrain



Rear Cargo Box Assembly

Accessory Code: 9AYV-806100-2A00

Features:

- Large storage capacity (30 Gallons, 115 Liters) can take 4 open face helmets
- Lockable lid, Stylish look, Heavy duty plastic
- Water tight seal
- With CF Connect, Easy to install and un-install, Tool-less
- Fit on CFORCE 850 XC & CFORCE 1000 perfectly



Center Cargo Box Assembly

Accessory Code: 9AYV-806200-2A00

Features:

- Large storage capacity (15.8 Gallons, 60 Liters)
- Lockable lid
- With CF Connect, Easy to install and un-install, Tool-less
- Stylish look
- Heavy duty plastic
- Fit on CFORCE 850 XC & CFORCE 1000 perfectly
- No mounting holes inside of cargo box, a perfect Water tight seal



850 XC & 1000

850 XC & 1000



Hand Guard Assembly With Fairing

Accessory Code: 9AYV-805100-2A00

Features:

- Integrated hand guard protect driver's hands
- Hard plastic cover with a small windshield
- Fit on CFORCE 850 XC & CFORCE 1000 perfectly



Vehicle Cover

Accessory Code: 85204Z-00600

Features:

- Made of UV-resistant solution black yarn-dyed Oxford PU
- Protects windshield and colored panels from abrasion
- Weather-resistant trailering cover protects your vehicle during storage and transportation
- Perfectly fit CFORCE 850 XC and 1000 with or without CFMOTO accessories



CFORCE 850 XC & 1000



14" Front Wheel Assembly – U.S. standard

Accessory Code: 9AYV-807100-2A00

Features:

- New type 14" Rim,
- New type 27" Tire, for U.S. standard only. Not for Europe Standard.
- Beadlock for 14" Rim
- Fit on CFORCE 850 XC & CFORCE 1000 perfectly



14" Rear Wheel Assembly – U.S. standard

Accessory Code: 9AYV-807200-2A00

Features:

- New type 14" Rim
- New type 27" Tire, for U.S. standard only. Not for Europe Standard.
- Beadlock for 14" Rim
- Fit on CFORCE 850 XC & CFORCE 1000 perfectly

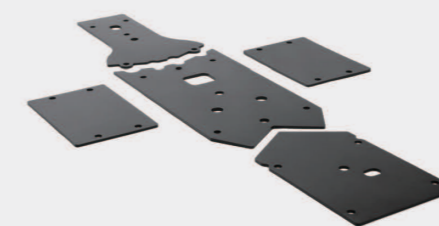


HDPE Skid Plate Assembly

Accessory Code: 9AWV-804100-2000

Features:

- Made of high density polyethylene HDPE (thickness 8mm)
- Ultimate durability
- High impact strength, Ultimate durability
- Offering great protection in rough terrain
- Fit on CFORCE 850 XC & CFORCE 1000 perfectly



A-arm Protector Assembly

Accessory Code: 9AWV-804200-2000

Features:

- Made of high strength aluminum (thickness 5mm)
- Painting Black
- Ultimate durability
- Offering great protection for A-arms in rough terrain





CFORCE UNIVERSAL

Canvas Storage Bag

Accessory Code: 9DS#-809200-6000

Features:

- Transport gear in a weatherproof bag
- IPX4 waterproof
- Large capacity 99L
- Designed to maximize potential storage
- Extra compartments on top to store goods



Passenger Gauntlet Assembly

Accessory Code: 85214G-00001

Features:

- Outer made of Canvas, Inside made of polyester fiber
- Keep passenger's hands warm in the cold weather
- With Velcro and snap-fit, easy to install and remove



Passenger Infill Rack Assembly

Accessory Code: 9DSV-803100-6000

Features:

- Passenger infill rack extend the loading capacity of ATV
 - Built a big flat rear rack for taking big items.
 - With CF Connect mounting holes, more accessories can be installed on the rack easily.
- Easy to install and remove, Tool-less



Tools Box Assembly

Accessory Code: 5BYV-804100-1000

Features:

- Tool box can take the necessary tools and small items
- Use Velcro to lock the tool box on vehicle, easy to change the place
- With tool box, consumer can get the tool anytime and anywhere.
- L x W x H: 422 x 170 x 57mm (16.6 x 6.9 x 2.2 inch)



CFMOTO Tool Support, Pair

Accessory Code: 852114-00001

Features:

- Tool Holder FlexGrip™ by ATV-TEK with CFConnect™ system
- A true custom fit for your lifestyle, use it for guns, bows, tools, or any other item.
- CFMOTO riders have effortless installation and versatility thanks to a finger adjustable rotation of the grip and convenient mounting options with CFConnect™



Heated Grips & Thumb Throttle Assembly

Accessory Code: 9DQV-808100-3000



CFConnect Clamp, Fair

Accessory Code: 9DS#-809000-6000



Whip Flag

Accessory Code: 9DSV-807100-6000

Whip Flag

Accessory Code: 9DSV-807200-6000

Features:

- Make sure everyone knows what you are riding
- Perfect for the dunes and new riders
- 7.5-ft.(2.3m) length
- Includes flag mount
- 9DSV-807100-6000 apply to CFMOTO CFORCE 400 / 400 Touring & CFORCE 500 / 500 Touring and Youth ATV.
- 9DSV-807200-6000 apply to CFMOTO CFORCE 625 / 625 Touring & CFORCE 850 XC / 1000.



UNIVERSAL

CFMOTO TOWING

Winch Rope Fairlead

Accessory Code: 7030-150701

Features:

- Used with CFMOTO winch
- Aluminum fairlead reduces wear on wire rope for heavy attachment application



Synthetic Winch Rope

Accessory Code: 7020-800750

Features:

- High strength winch rope, pull up to 4500 lbs
- Rope length up to 12 meters.
- Light weight, easy to carry
- Durable, sea water resistance, UV resistance and temperature difference repetition, etc
- Convenient, fast and safe operation



Tree Saver Strap

Accessory Code: 9DS#-808302-6000

Features:

- Large eyes with heavy duty chafe protection allow for easy rigging
- Bright yellow nylon provide excellent visibility when winching
- Center chafe protects from abrasion damage



Hitch Kit (2", 136mm)

Accessory Code: 7000-808100

Features:

- 2 inch hitch kit for ATV/UTV
- 136mm length towing bar (from pin shaft hole to hitch ball hole)
- Easy to install and remove
- E-coated with black powder coat



Hitch Kit (2", 290mm)

Accessory Code: 9AW#-808100

Features:

- 2 inch hitch kit for ATV/UTV
- 290mm length towing bar (from pin shaft hole to hitch ball hole)
- Easy to install and remove
- E-coated with black powder coat

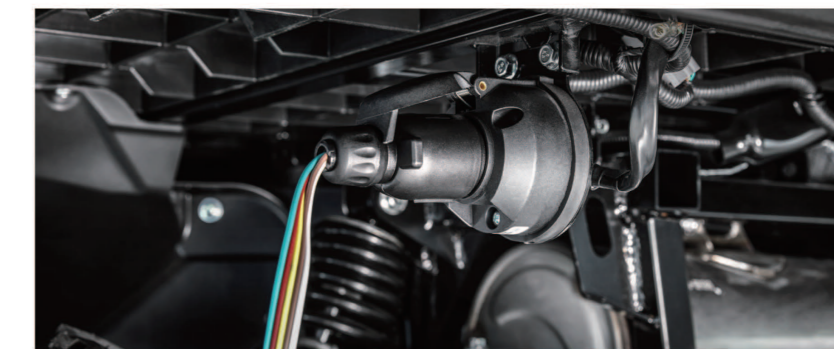


Converting Cable, Socket Assembly

Accessory Code: 7020-800200-1000

Features:

- Use for all CFMOTO vehicle with trailer
- The socket cover defense against dirt and water
- Power socket is for trailer in most markets, added Adaptor is for North America Market



CFORCE SNOW PLOW



60" Plow Blade Assembly

Accessory Code: 9AWV-804300-2000

Features:

- Plow wall thickness 2.5mm
- Attach the plow push tube at the front of CFMOTO vehicle easily
- Increased sacrifice anodes for longer use of snow plows
- E-coated with black powder coat
- Make the job easier with the right tools, clear long alleys and make the task easier by sending the snow further out of the way.



72" Plow Blade Assembly

Accessory Code: 5HYV-804300-1000

Features:

- Plow wall thickness 2.5mm
- Attach the plow push tube at the front of CFMOTO vehicle easily
- Increased sacrifice anodes for longer use of snow plows
- E-coated with black powder coat
- Make the job easier with the right tools, clear long alleys and make the task easier by sending the snow further out of the way.



Plow Fenders, Pair

Accessory Code: 5HYV-804400-1000

Features:

- For CFMOTO plow, Sold in pairs
- Wall Thickness: 3mm
- Install on CFMOTO plow system easily
- E-coated with black powder coat



Plow Mount Bracket Assembly

Accessory Code: 9AYV-804200-2000

Features:

- For CFORCE 850 XC & CFORCE 1000
- Wall Thickness: 6mm
- Install on the front of CFMOTO vehicle easily and lock the plow push tube easily
- Increased sacrifice anodes for longer use of snow plows
- E-coated with black powder coat

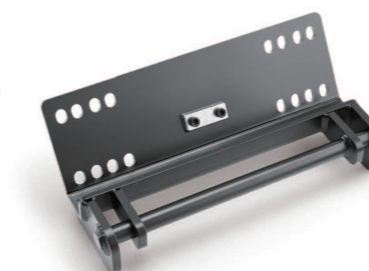


Plow Mount Bracket Assembly

Accessory Code: 9DSV-804100-6000

Features:

- For CFORCE 400 / 400TOURING & 500 / 500TOURING & CFORCE 625 & 625 Touring
- Wall Thickness: 6mm
- Install on the front of CFMOTO vehicle easily and lock the plow push tube easily
- Increased sacrifice anodes for longer use of snow plows
- E-coated with black powder coat

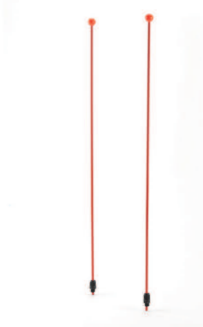


Plow Markers, Pair

Accessory Code: 5HYV-806400-1000

Features:

- For CFMOTO plow, Sold in pairs
- Height: 75mm (29.5 inch)
- Bright orange color, help locate the edges of plow
- Install on CFMOTO plow system easily



Plow Push Tube Assembly

Accessory Code: 5HYV-804200-1000

Features:

- For CFMOTO plow
- Plow wall thickness 5mm
- Attach the plow mount bracket at the front of CFMOTO vehicle easily
- Increased sacrifice anodes for longer use of snow plows
- E-coated with black powder coat





REF	PRODUCT NAME	PRODUCT CODE	POWER	STARTING	STANARDED	
1	GENERATOR - i20	852100-00004	2.0kw	Recoil	EUROPE	230volt/50Hz
2		852100-00005			U.S.	120volt/60Hz
3		852100-00034			Canada	120volt/60Hz
4		852100-00006			Australia	230volt/50Hz
5		852100-00019			China	230volt/50Hz
6		852100-00024			Korean	220volt/60Hz
7	GENERATOR - i25	852100-00007	2.4kw	Recoil	EUROPE	230volt/50Hz
8		852100-00008			U.S.	120volt/60Hz
9		852100-00035			Canada	120volt/60Hz
10		852100-00009			Australia	230volt/50Hz
11		852100-00020			China	230volt/50Hz
12		852100-00025			Korean	220volt/60Hz
13	GENERATOR - i30	852100-00010	3.0kw	Recoil	EUROPE	230volt/50Hz
14		852100-00011			U.S.	120volt/60Hz
15		852100-00036			Canada	120volt/60Hz
16		852100-00012			Australia	230volt/50Hz
17		852100-00021			China	230volt/50Hz
18		852100-00026			Korean	220volt/60Hz



REF	PRODUCT NAME	PRODUCT CODE	POWER	STARTING	STANARDED	
1	GENERATOR - i20	852000-00004	2.0kw	Recoil	EUROPE	230volt/50Hz
2		852000-00005			U.S.	120volt/60Hz
3		852000-00006			Australia	120volt/60Hz
4		852000-00019			China	230volt/50Hz
5		852000-00024			Korean	220volt/60Hz
6		852000-00007			EUROPE	230volt/50Hz
7	GENERATOR - i25	852000-00008	2.4kw	Recoil	U.S.	120volt/60Hz
8		852000-00009			Australia	120volt/60Hz
9		852000-00020			China	230volt/50Hz
10		852000-00025			Korean	220volt/60Hz
11		852000-00010			EUROPE	230volt/50Hz
12		852000-00011			U.S.	120volt/60Hz
13	GENERATOR - i27	852000-00012	3.0kw	Recoil	Australia	120volt/60Hz
14		852000-00021			China	230volt/50Hz
15		852000-00026			Korean	220volt/60Hz

REF	PRODUCT NAME	PRODUCT CODE	POWER	STARTING	STANARDED	
1	GENERATOR - i45	852100-00013	4.5kw	Recoil	EUROPE	230volt/50Hz
2		852100-00014			U.S.	120volt/60Hz
3		852100-00037			Canada	120volt/60Hz
4		852100-00015			Australia	230volt/50Hz
5		852100-00022			China	230volt/50Hz
6		852100-00027			Korean	220volt/60Hz
7	GENERATOR - i45E	852100-00016	4.5kw	Recoil/ Electric/ Remote	EUROPE	230volt/50Hz
8		852100-00017			U.S.	120volt/60Hz
9		852100-00038			Canada	120volt/60Hz
10		852100-00018			Australia	230volt/50Hz
11		852100-00023			China	230volt/50Hz
12		852100-00028			Korean	220volt/60Hz



REF	PRODUCT NAME	PRODUCT CODE	POWER	STARTING	STANARDED	
1	GENERATOR - i45	852000-00013	4.5kw	Recoil	EUROPE	230volt/50Hz
2		852000-00014			U.S.	120volt/60Hz
3		852000-00015			Australia	120volt/60Hz
4		852000-00022			China	230volt/50Hz
5		852000-00027			Korean	220volt/60Hz
7		852000-00016			EUROPE	230volt/50Hz
8	GENERATOR - i45E	852000-00017	4.5kw	Recoil/ Electric/ Remote	U.S.	120volt/60Hz
9		852000-00018			Australia	120volt/60Hz
10		852000-00023			China	230volt/50Hz
11		852000-00028			Korean	220volt/60Hz

