

experience  
more  
together

[Global.cfmoto.com](https://www.global.cfmoto.com)

**ZHEJIANG CFMOTO POWER CO.,LTD.**

NO.116,Wuzhou Road,Yuhang Economic Development Zone  
Hangzhou 311100,Zhejiang Province.

Tel:86-571-89265799

Facebook:CFMOTO\_Official

Instagram:cfmoto\_world

YouTube:CFMOTO



**ACCESSORIES**

Photos are for illustrative purposes only. Specs to change without notice. Subject to material object. Details in store.





experience  
more  
together

## UFORCE 600

P03 — P06

# ACCESSORIES

## UFORCE 550&800

P01 — P02



## UFORCE 1000&1000XL

P07 — P12



# UFORCE

## UNIVERSAL

P13 — P14



## TOWING

P15 — P16



## SNOW PLOW

P17 — P18



## CFMOTO POWER

P19 — P20





# UFORCE

## 550 & 800



### Front Bumper Assembly

Accessory Code: 7030-801000

**Features:**

- Steel Tube Diameter:  $\phi 32\text{mm}$
- Wall Thickness: 2mm
- Front vehicle protection
- Headlight Full Protection
- Front hood protection
- Integrated rack extension
- E-coated with black powder coat



### Aluminum Skid Plate Assembly

Accessory Code: 7030-800100

**Features:**

- Made of high strength aluminum (thickness 3mm)
- Ultimate durability
- High impact strength
- Offering great protection in rough terrain



### A-Arm Protector Assembly

Accessory Code: 7030-800200

**Features:**

- Made of high strength aluminum (thickness 3mm)
- Ultimate durability
- High impact strength
- Easy to install



### Roof Rack Assembly

Accessory Code: 703A-800400

**Features:**

- Roof rack assembly works on UFORCE 550 & 800
- Increase the cargo capacity of UFORCE 550 & 800.
- E-coated with black powder coat



### Hitch Kit (for U5 & U8)

Accessory Code: 5BY#-808100

**Features:**

- 2 inch hitch kit for UFORCE 550 & 800
- E-coated with black powder coat



### LED Light bar Assembly

Accessory Code: 703A-801500

**Features:**

- 8100 lumens LED light (18 beads x 5w)
- OSRAM high power Led chips
- Anti-glare optical design
- IP68 waterproof
- Fits roof rack, easy to install
- Long range illumination up to



UFORCE 550 & 800



### HDPE Skid Plate Assembly

Accessory Code: 5ASV-804300-6000

**Features:**

- Made of high density polyethylene HDPE (thickness 8mm)
- Ultimate durability
- High impact strength, Ultimate durability
- Offering great protection in rough terrain
- Fit on UFORCE 600 perfectly



### Front Bumper Assembly

Accessory Code: 5AS#-801100-6000

**Features:**

- Steel Tube diameter 38mm & wall thickness 2mm
- Durable, E-coated with black powder coat
- Easy to install
- Provides front protection of vehicle
- Headlight protection
- Works with winch system and plow system



### Rear Bumper Assembly

Accessory Code: 5AS#-801200-6000

**Features:**

- Steel Tube diameter 38mm & wall thickness 2mm
- Durable, E-coated with black powder coat
- Easy to install
- Provides rear protection of vehicle
- Works hitch system



### Nerf Bars Assembly

Accessory Code: 5AS#-801300-6000

**Features:**

- Steel Tube diameter 32mm & wall thickness 2mm
- Durable, E-coated with black powder coat
- Easy to install
- Provides side protection of vehicle
- Integrated boot scraper helps keep interior clean



# UFORCE 600



### Side Mirrors Assembly

Accessory Code: 5ASV-805500-6000

**Features:**

- Perfect fit on UFORCE 600
- Wide range rear view
- Make UFORCE 600 ride more safety
- Stable, quiet at low/high speed riding condition
- Compatible with roof, windshield, and other accessories



### U6 Vehicle Cover

Accessory Code: 85214Z-00100

**Features:**

- Made of UV-resistant solution black yarn-dyed Oxford PU
- Protects windshield and colored panels from abrasion
- Weather-resistant trailering cover protects your vehicle during storage and transportation
- Perfectly fit UFORCE 600 with or without CFMOTO accessories



### Snorkel Assembly

Accessory Code: 5ASV-803100-6000

**Features:**

- Perfect protection against dust and rain
- Stable, quiet at low/high speed riding condition
- Make UFORCE 600 work well under harsh environment



### Left Full Door Assembly

Accessory Code: 5ASV-807100-6000

### Right Full Door Assembly

Accessory Code: 5ASV-807200-6000

**Features:**

- The strong and durable doors provide a quiet and comfortable driving environment
- Doors with convenient integrated storage areas
- Exterior and Interior door handle
- Polycarbonate windows can be opened fully.
- The main tube of door structure is 20 x 20 mm square tube
- 360 degree bubble seal





## U6 Audio System

Accessory Code:5ASV-801000

### Features:

- **Purposely Engineered for CFMOTO UFORCE 600**  
Audio system specifically design for UFORCE 600 fitment
- **High Contrast 160-Watt LCD Source Unit**  
AM/FM, Bluetooth with Android phone and Apple iPod/iPhone control Built-in-five band equalizer
- **Independent 2 x 6.5-inch Coaxial Speakers**  
Composite construction midrange for deep and accurate midbass 0.75-inch titanium dome tweeter for crystal clear-high frequencies
- **High Impact HDPE Composite Enclosure**  
Ultra-compact design takes up minimal space
- **LIFE SHIELD IPX Rated**  
Fully protected against the elements



## Cargo Bed Rack Assembly

Accessory Code:5ASV-806200-6000

### Features:

- Add the space for loading more goods
- Can work with CFMOTO U6 cargo box
- Durable, steel tube construction, E-coated with black powder coat
- With CF Connect, Easy to install and remove, Tool-less



## Cargo Bed Box Assembly

Accessory Code:5ASV-806100-6000

### Features:

- Large storage capacity (48 Gallons, ~182 Liters)
- Durable, Heavy duty plastic, Stylish look
- With drain hole, Easy to clean the box and drain the water
- With CF Connect, Easy to install and remove, Tool-less
- With 2 openable lids, easy to put goods in and take them out
- Lockable lid, No mounting holes inside of cargo box, Water tight seal
- With the integrated flat cover with rope holes, can put more goods on box



## Front Full Windshield Assembly

Accessory Code:5ASV-805100-6000

### Features:

- Made of impact-resistant polycarbonate
- Excellent visibility
- Surface hardening treatment
- Stable and quiet at riding condition
- UV and weather endurance with no yellowing
- Protects drivers and passenger from the elements
- With CF Connect, tool-less, Easy to install and remove after initial installation



## Front Half Windshield Assembly

Accessory Code:5ASV-805300-6000

### Features:

- Made of impact-resistant polycarbonate
- Excellent visibility
- Surface hardening treatment
- Stable and quiet at riding condition
- UV and weather endurance with no yellowing
- Protects drivers and passenger from the elements
- With CF Connect, tool-less, Easy to install and remove after initial installation



## Rear Panel Assembly

Accessory Code:5ASV-805200-6000

### Features:

- Made of impact-resistant polycarbonate
- Excellent visibility
- Surface hardening treatment
- Stable and quiet at riding condition
- UV and weather endurance with no yellowing
- Prevent backdraft of dust or rain in harsh environments
- With CF Connect, tool-less, Easy to install and remove after initial installation



## Driver Heating Seat Assembly

Accessory Code:5ASV-805600-6000

### Features:

- Single Seat Kit, includes 1 switch
- Rated Voltage 12V, Rated Power 40W±2W
- Thermostat, 2 levels:  
High: OFF- 70°C, ON- 65°C Low: OFF- 55°C, ON- 50°C
- The temperature of the seat surface makes the driver comfort in cold environment



## Passenger Heating Seat Assembly

Accessory Code:5ASV-805700-6000

### Features:

- Single Seat Kit, includes 1 switch
- Rated Voltage 12V, Rated Power 40W±2W
- Thermostat, 2 levels:  
High: OFF- 70°C, ON- 65°C Low: OFF- 55°C, ON- 50°C
- The temperature of the seat surface makes the passenger comfort in cold environment



# UFORCE 600





### Side Mirrors Assembly

Accessory Code: 5HY#-805500-1200

**Features:**

- Perfect fit on UFORCE 1000
- Wide range rear view
- Make UFORCE 1000 ride more safety
- Stable, quiet at low/high speed riding condition
- Compatible with roof, windshield, and other accessories



### Front Bumper Assembly

Accessory Code: 5HY#-801100-1000

**Features:**

- Steel Tube diameter 38mm & wall thickness 2mm
- Durable, E-coated with black powder coat
- Easy to install
- Provides front protection of vehicle
- Headlight protection
- Works with winch system and plow system



### Rear Bumper Assembly

Accessory Code: 5HY#-801200-1000

**Features:**

- Steel Tube diameter 38mm & wall thickness 2mm
- Durable, E-coated with black powder coat
- Easy to install
- Provides rear protection of vehicle
- Works hitch system



# UFORCE 1000&1000XL



ACCESSORY

### Nerf Bars Assembly – UFORCE 1000

Accessory Code: 5HY#-801300-1000

**Features:**

- Steel Tube diameter 50mm & wall thickness 2mm
- Durable, E-coated with black powder coat
- Easy to install
- Provides side protection of vehicle
- Integrated boot scraper helps keep interior clean



### Snorkel Assembly

Accessory Code: 5HY#-803000-1200

**Features:**

- Perfect protection against dust and rain
- Stable, quiet at low/high speed riding condition
- Make UFORCE 1000 work well under harsh environment



### Nerf Bars Assembly-UFORCE 1000XL

Accessory Code: 5SY#-801300-6000

**Features:**

- Steel Tube diameter 50mm & wall thickness 2mm
- Durable, E-coated with black powder coat
- Easy to install
- Provides side protection of vehicle
- Integrated boot scraper helps keep interior clean



1000&1000XL

1000&1000XL



### Left Full Door Assembly

Accessory Code: 5HYV-807100-1000

### Right Full Door Assembly

Accessory Code: 5HYV-807200-1000

#### Features:

- For UFORCE 1000 only
- The strong and durable doors provide a quiet and comfortable driving environment
- Doors with convenient integrated storage areas
- Exterior and Interior door handle
- Polycarbonate windows can be opened fully.
- The main tube of door structure is 20 x 20 mm square tube
- 360 degree bubble seal



### Cargo Bed Rack Assembly

Accessory Code: 5HYV-806200-1000

#### Features:

- Add the space for loading more goods
- Can work with CFMOTO U10 cargo box
- Durable, steel tube construction, E-coated with black powder coat
- With CF Connect, Easy to install and remove, Tool-less



### Cargo Bed Box Assembly

Accessory Code: 5HYV-806100-1000

#### Features:

- Large storage capacity (52.5 Gallons, ~199 Liters)
- Durable, Heavy duty plastic, Stylish look
- With drain hole, Easy to clean the box and drain the water
- With CF Connect, Easy to install and remove, Tool-less
- With 2 openable lids, easy to put goods in and take them out
- Lockable lid, No mounting holes inside of cargo box, Water tight seal
- With the integrated flat cover with rope holes, can put more goods on box



# UFORCE 1000&1000XL

### Front Half Windshield Assembly

Accessory Code: 5SYV-805300-1000

#### Features:

- Made of impact-resistant polycarbonate
- Excellent visibility
- Surface hardening treatment
- Stable and quiet at riding condition
- UV and weather endurance with no yellowing
- Protects drivers and passenger from the elements
- With CF Connect, tool-less, Easy to install and remove after initial installation



### Front Full Windshield Assembly

Accessory Code: 5SYV-805100-1000

#### Features:

- Made of impact-resistant polycarbonate
- Excellent visibility
- Surface hardening treatment
- Stable and quiet at riding condition
- UV and weather endurance with no yellowing
- Protects drivers and passenger from the elements
- With CF Connect, tool-less, Easy to install and remove after initial installation



### Rear Panel Assembly

Accessory Code: 5SYV-805200-1000

#### Features:

- Made of impact-resistant polycarbonate
- Excellent visibility
- Surface hardening treatment
- Stable and quiet at riding condition
- UV and weather endurance with no yellowing
- Prevent backdraft of dust or rain in harsh environments
- With CF Connect, tool-less, Easy to install and remove after initial installation





# UFORCE 1000&1000XL



## Driver Heating Seat Assembly

Accessory Code: 5HYV-805100-1000

Features:

- Single Seat Kit, includes 1 switch
- Rated Voltage 12V, Rated Power 40W±2W
- Thermostat, 2 levels:  
High: OFF- 70°C, ON- 65°C Low: OFF- 55°C, ON- 50°C
- The temperature of the seat surface makes the driver comfort in cold environment



## Front Passenger Heating Seat Assembly

Accessory Code: 5HYV-805200-1000

Features:

- Single Seat Kit, includes 1 switch
- Rated Voltage 12V, Rated Power 40W±2W
- Thermostat, 2 levels:  
High: OFF- 70°C, ON- 65°C Low: OFF- 55°C, ON- 50°C
- The temperature of the seat surface makes the passenger comfort in cold environment



## Rear Bumper and Nerf Bars

Accessory Code: 5HY0-802000

Features:

- Made of φ 32mm steel pipe
- Rear and Side vehicle protection
- Taillight Protection
- Anti-corrosion coating with durable coat finish
- Tough and Strong



## Front Bumper and Rack

Accessory Code: 5HY0-801000

Features:

- Integrated rack extension
- Made of φ 32mm steel pipe
- Front vehicle protection
- Headlight Protection
- Anti-corrosion coating with durable coat finish
- Tough and Strong



## Skid Plate Assembly

Accessory Code: 5HY0-805200

Features:

- Made of high strength aluminum (thickness 3mm)
- Ultimate durability
- High impact strength
- Offering great protection in rough terrain



## A-arm Protector Assembly

Accessory Code: 5HY0-805100

Features:

- Made of high strength aluminum (thickness 3mm)
- Ultimate durability
- High impact strength
- Offering great protection in rough terrain



## Cargo Bed Wall Extender Assembly

Accessory Code: 5HY0-803000

Features:

- Extend the capacity of dumping box
- Tough and Strong
- Anti-corrosion coating with durable coat finish
- This Cage need 12 units quick release clamps (5HY0-809100) to install



# ACCESSORIES





# UFORCE UNIVERSAL

## Universal Audio System

Accessory Code: UNIS-850100

### Features:

- 33.5 inch Universal Audio System
- Purposely Engineered for CFMOTO  
Overhead audio system specifically design for CFMOTO UTV and SSV fitment
- High Contrast 160-Watt LCD Source Unit  
AM/FM, Bluetooth with Android phone and Apple iPod/iPhone control Built-in-five band equalizer
- Compositd 4 x 6.5-inch Coaxial Speakers  
Composite construction midrange for deep and accurate midbass 0.75-inch titanium dome tweeter for crystal clear-high frequencies
- High Impact HDPE Composite Enclosure  
Ultra-compact design takes up minimal space
- Integrated Touch Controlled Demo Light  
LED dome light provides necessary light inside your UTV
- LIFE SHIELD IPX Rated  
Fully protected against the elements



## Center Mirror Assembly - Premium

Accessory Code: 5BWV-805600-5000

### Features:

- Large range rear review, make U6&U10 ride more safety
- Aluminum mounting brackets
- Stable, quiet at low/high speed riding condition
- Compatible with roof, windshield, and other accessories



## Center Mirror Assembly

Accessory Code: 5HY#-805600-1200

### Features:

- Perfect Fit on UFORCE 600&1000&1000XL
- Wide range rear view, make U10 ride more safety
- Stable, quiet at low/high speed riding condition
- Compatible with roof, windshield, and other accessories



## Tools Box Assembly

Accessory Code: 5BYV-804100-1000

### Features:

- Tool box can take the necessary tools and small items
- Use Velcro to lock the tool box on vehicle, easy to change the place
- With tool box, consumer can get the tool anytime and anywhere.
- L x W x H: 422 x 170 x 57 mm (16.6 x 6.9 x 2.2 inch)



# UNIVERSAL

## CFMOTO Tool Support, Pair

Accessory Code: 852114-00001

### Features:

- Tool Holder FlexGrip™ by ATV-TEK with CFConnect™ system
- A true custom fit for your lifestyle, use it for guns, bows, tools, or any other item.
- CFMOTO riders have effortless installation and versatility thanks to a finger adjustable rotation of the grip and convenient mounting options with CFConnect™



## Overhead Storage Bag Assembly

Accessory Code: 5HYV-809200-1000

### Features:

- Perfect Fit on roof of UFORCE 600 and UFORCE 1000
- Zippered cargo areas with dust flaps keep items dry and clean
- Large storage capacity
- One special storage space designed for roadmap, phone and others which need to be accessed easily
- Easy to install



# UNIVERSAL



# UFOORCE TOWING

## Winch Rope Fairlead

Accessory Code: 7030-150701

### Features:

- Used with CFMOTO winch
- Aluminum fairlead reduces wear on wire rope for heavy attachment application



## Synthetic Winch Rope

Accessory Code: 7020-800750

### Features:

- High strength winch rope, pull up to 4500 lbs
- Rope length up to 12 meters.
- Light weight, easy to carry
- Durable, sea water resistance, UV resistance and temperature difference repetition, etc
- Convenient, fast and safe operation



## Tree Saver Strap

Accessory Code: 9DS#-808302-6000

### Features:

- Large eyes with heavy duty chafe protection allow for easy rigging
- Bright yellow nylon provide excellent visibility when winching
- Center chafe protects from abrasion damage



## Hitch Kit (2", 136mm)

Accessory Code: 7000-808100

### Features:

- 2 inch hitch kit for ATV/UTV
- 136mm length towing bar (from pin shaft hole to hitch ball hole)
- Easy to install and remove
- E-coated with black powder coat



## Hitch Kit (2", 290mm)

Accessory Code: 9AW#-808100

### Features:

- 2 inch hitch kit for ATV/UTV
- 290mm length towing bar (from pin shaft hole to hitch ball hole)
- Easy to install and remove
- E-coated with black powder coat



## Converting Cable, Socket Assembly

Accessory Code: 7020-800200-1000

### Features:

- Use for all CFMOTO vehicle with trailer
- The socket cover defense against dirt and water
- Power socket is for trailer in most markets, added Adaptor is for North America Market





# UFORCE SNOW PLOW



## 60" Plow Blade Assembly

Accessory Code: 9AWV-804300-2000

### Features:

- Plow wall thickness 2.5mm
- Attach the plow push tube at the front of CFMOTO vehicle easily
- Increased sacrifice anodes for longer use of snow plows
- E-coated with black powder coat
- Make the job easier with the right tools, clear long alleys and make the task easier by sending the snow further out of the way.

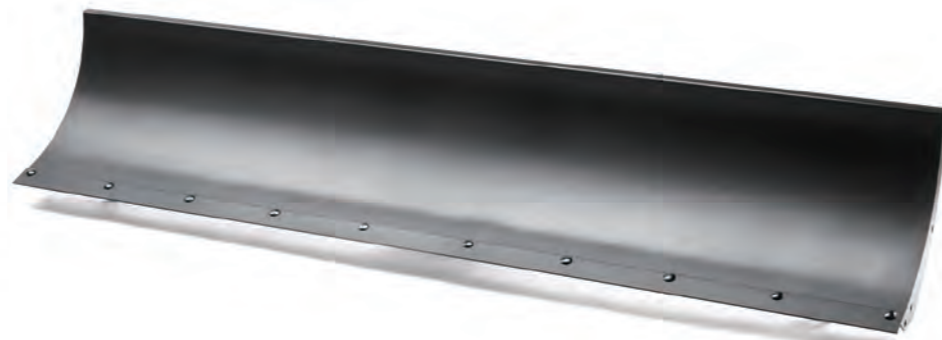


## 72" Plow Blade Assembly

Accessory Code: 5HYV-804300-1000

### Features:

- Plow wall thickness 2.5mm
- Attach the plow push tube at the front of CFMOTO vehicle easily
- Increased sacrifice anodes for longer use of snow plows
- E-coated with black powder coat
- Make the job easier with the right tools, clear long alleys and make the task easier by sending the snow further out of the way.



## Plow Fenders, Pair

Accessory Code: 5HYV-804400-1000

### Features:

- For CFMOTO plow, Sold in pairs
- Wall Thickness: 3mm
- Install on CFMOTO plow system easily
- E-coated with black powder coat



## Plow Mount Bracket Assembly

Accessory Code: 5ASV-804200-6000

### Features:

- For UFORCE 600
- Wall Thickness: 6mm
- Install on the front of U6 easily and lock the plow push tube easily
- Increased sacrifice anodes for longer use of snow plows
- E-coated with black powder coat



## Plow Mount Bracket Assembly

Accessory Code: 5HYV-804100-1000

### Features:

- For UFORCE 1000 & UFORCE 1000 XL
- Wall Thickness: 6mm
- Install on the front of U10 easily and lock the plow push tube easily
- Increased sacrifice anodes for longer use of snow plows
- E-coated with black powder coat



## Plow Markers, Pair

Accessory Code: 5HYV-806400-1000

### Features:

- For CFMOTO plow, Sold in pairs
- Height: 75mm (29.5 inch)
- Bright orange color, help locate the edges of plow
- Install on CFMOTO plow system easily



## Plow Push Tube Assembly

Accessory Code: 5HYV-804200-1000

### Features:

- For CFMOTO plow
- Plow wall thickness 5mm
- Attach the plow mount bracket at the front of CFMOTO vehicle easily
- Increased sacrifice anodes for longer use of snow plows
- E-coated with black powder coat







REF	PRODUCT NAME	PRODUCT CODE	POWER	STARTING	STANARDED	
1	GENERATOR - i20	852100-00004	2.0kw	Recoil	EUROPE	230volt/50Hz
2		852100-00005			U.S.	120volt/60Hz
3		852100-00034			Canada	120volt/60Hz
4		852100-00006			Australia	230volt/50Hz
5		852100-00019			China	230volt/50Hz
6		852100-00024			Korean	220volt/60Hz
7	GENERATOR - i25	852100-00007	2.4kw	Recoil	EUROPE	230volt/50Hz
8		852100-00008			U.S.	120volt/60Hz
9		852100-00035			Canada	120volt/60Hz
10		852100-00009			Australia	230volt/50Hz
11		852100-00020			China	230volt/50Hz
12		852100-00025			Korean	220volt/60Hz
13	GENERATOR - i30	852100-00010	3.0kw	Recoil	EUROPE	230volt/50Hz
14		852100-00011			U.S.	120volt/60Hz
15		852100-00036			Canada	120volt/60Hz
16		852100-00012			Australia	230volt/50Hz
17		852100-00021			China	230volt/50Hz
18		852100-00026			Korean	220volt/60Hz



REF	PRODUCT NAME	PRODUCT CODE	POWER	STARTING	STANARDED	
1	GENERATOR - i20	852000-00004	2.0kw	Recoil	EUROPE	230volt/50Hz
2		852000-00005			U.S.	120volt/60Hz
3		852000-00006			Australia	120volt/60Hz
4		852000-00019			China	230volt/50Hz
5		852000-00024			Korean	220volt/60Hz
6		852000-00007			EUROPE	230volt/50Hz
7	GENERATOR - i25	852000-00008	2.4kw	Recoil	U.S.	120volt/60Hz
8		852000-00009			Australia	120volt/60Hz
9		852000-00020			China	230volt/50Hz
10		852000-00025			Korean	220volt/60Hz
11		852000-00010			EUROPE	230volt/50Hz
12		852000-00011			U.S.	120volt/60Hz
13	GENERATOR - i27	852000-00012	3.0kw	Recoil	Australia	120volt/60Hz
14		852000-00021			China	230volt/50Hz
15		852000-00026			Korean	220volt/60Hz

REF	PRODUCT NAME	PRODUCT CODE	POWER	STARTING	STANARDED	
1	GENERATOR - i45	852100-00013	4.5kw	Recoil	EUROPE	230volt/50Hz
2		852100-00014			U.S.	120volt/60Hz
3		852100-00037			Canada	120volt/60Hz
4		852100-00015			Australia	230volt/50Hz
5		852100-00022			China	230volt/50Hz
6		852100-00027			Korean	220volt/60Hz
7	GENERATOR - i45E	852100-00016	4.5kw	Recoil/ Electric/ Remote	EUROPE	230volt/50Hz
8		852100-00017			U.S.	120volt/60Hz
9		852100-00038			Canada	120volt/60Hz
10		852100-00018			Australia	230volt/50Hz
11		852100-00023			China	230volt/50Hz
12		852100-00028			Korean	220volt/60Hz



REF	PRODUCT NAME	PRODUCT CODE	POWER	STARTING	STANARDED	
1	GENERATOR - i45	852000-00013	4.5kw	Recoil	EUROPE	230volt/50Hz
2		852000-00014			U.S.	120volt/60Hz
3		852000-00015			Australia	120volt/60Hz
4		852000-00022			China	230volt/50Hz
5		852000-00027			Korean	220volt/60Hz
7		852000-00016			EUROPE	230volt/50Hz
8	GENERATOR - i45E	852000-00017	4.5kw	Recoil/ Electric/ Remote	U.S.	120volt/60Hz
9		852000-00018			Australia	120volt/60Hz
10		852000-00023			China	230volt/50Hz
11		852000-00028			Korean	220volt/60Hz

