

experience  
more  
together

[Global.cfmoto.com](https://www.global.cfmoto.com)

**ZHEJIANG CFMOTO POWER CO.,LTD.**

NO.116,Wuzhou Road,Yuhang Economic Development Zone  
Hangzhou 311100,Zhejiang Province.

Tel:86-571-89265799

Facebook:CFMOTO\_Official

Instagram:cfmoto\_world

YouTube:CFMOTO



Photos are for illustrative purposes only. Specs to change without notice. Subject to material object. Details in store.

 **CFMOTO**



experience  
more  
together

## CFORCE 625/ 625 TOURING

P 09 — P 12

# ACCES- SORIES

CFORCE 450 S/L & 520 S/L  
CFORCE 400/ 400 TOURING  
CFORCE 500/ 500 TOURING

P 01 — P 08



## CFORCE 850 XC & 1000

P 13 — P 20

# CFORCE

## UNIVERSAL

P 21 — P 22



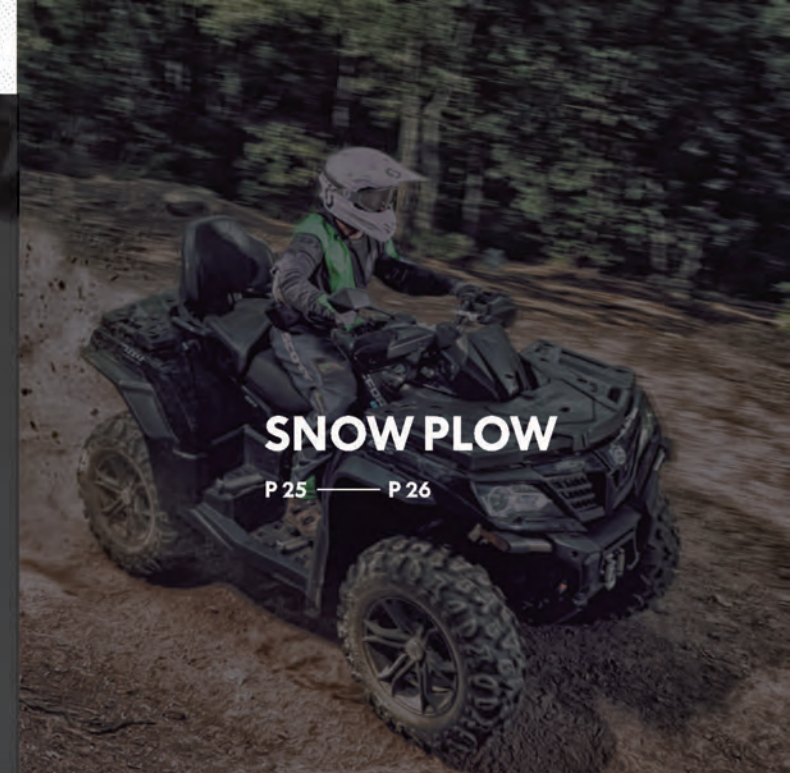
## TOWING

P 23 — P 24



## SNOW PLOW

P 25 — P 26



## CFMOTO POWER

P 27 — P 28





# CFORCE

## 450 S/L & 520 S/L



### Front Bumper Assembly

Accessory Code: 9GQ0-200300

**Features:**

- Steel Tube diameter 35mm & wall thickness 2mm
- Durable, E-coated with black powder coat
- Easy to install
- Provides front protection of vehicle
- Headlight protection
- Anti-corrosion coating with durable coat finish
- Works with winch system



### Rear Bumper Assembly

Accessory Code: 9GQ0-200400

**Features:**

- Steel Tube diameter 35mm & wall thickness 2mm
- Durable, E-coated with black powder coat
- Easy to install
- Provides rear protection of vehicle
- Taillight protection
- Anti-corrosion coating with durable coat finish
- Works hitch system



### Nerf Bars Assembly - 1UP

Accessory Code: 9GQ0-200500

**Features:**

- Steel Tube wall thickness 2mm
- Durable, E-coated with black powder coat
- Easy to install
- Provides side protection of vehicle
- Anti-corrosion coating with durable coat finish



### Nerf Bars Assembly - 2UP

Accessory Code: 9GQL-200500

**Features:**

- Steel Tube wall thickness 2mm
- Durable, E-coated with black powder coat
- Easy to install
- Provides side protection of vehicle
- Anti-corrosion coating with durable coat finish



### Front Rack Extender Assembly

Accessory Code: 9CR6-200600

**Features:**

- Integrated front rack extender
- Steel Tube Diameter:  $\varnothing 22\text{mm}$
- Durable, E-coated with black powder coat
- Easy to install
- Helps keep cargo securely in place



### Rear Rack Extender Assembly

Accessory Code: 9CR6-200700

**Features:**

- Integrated rear rack extender
- Steel Tube Diameter:  $\varnothing 22\text{mm}$
- Durable, E-coated with black powder coat
- Easy to install
- Helps keep cargo securely in place



### Aluminum Skid Plate Assembly - 1UP

Accessory Code: 9GQ0-203000

**Features:**

- Made of high strength aluminum (thickness 3mm)
- Ultimate durability
- High impact strength
- Offering great protection in rough terrain



### Aluminum Skid Plate Assembly - 2UP

Accessory Code: 9GQL-203000

**Features:**

- Made of high strength aluminum (thickness 3mm)
- Ultimate durability
- High impact strength
- Offering great protection in rough terrain







## CFORCE 450 S/L & 520 S/L

### Aluminum Winch Armor Assembly

Accessory Code: 9GQ0-200600

**Features:**

- Made of high strength aluminum (thickness 3mm)
- Ultimate durability
- High impact strength
- Offering great protection for winch



### Hand Guard Kit

Accessory Code: 9AW#-804700-2000

**Features:**

- Protect driver's hands
- Hard plastic cover and plastic bracket
- Fit on CFORCE 450 S/L / COFRCE 520 S/L perfectly



### A-arm protector assembly

Accessory Code: 9GQ0-204000

**Features:**

- Made of high strength aluminum (thickness 3mm)
- Ultimate durability
- High impact strength
- Offering great protection for A-arms in rough terrain



### Front Cargo Box Assembly

Accessory Code: 9GQ0-806100-1500

**Features:**

- Large storage capacity (13.2 Gallons, 50 Liters)
- Closing system with two lockable latches
- Reflectors on both sides of cargo box
- Water sealed to keep your things dry
- Strong and durable, does not crack, warp or dent



### Rear Cargo Box Assembly

Accessory Code: 9GQ0-806200-1500

**Features:**

- Large storage capacity (26.4 Gallons, 100 Liters)
- Closing system with one lockable latch
- With reflectors, driving more safety
- Water sealed to keep your things dry
- Strong and durable, does not crack, warp or dent



### Seat Cover – 1UP

Accessory Code: 85214B-00001

**Features:**

- Fit on CFORCE 450 S and CFORCE 520 S perfectly
- Prevent the seat from dirt and dust
- Canvas Material



# CFORCE 450 S/L & 520 S/L



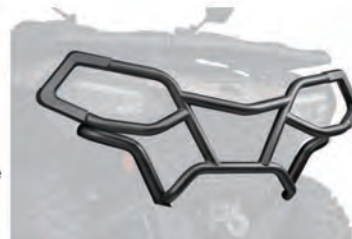


### Front Bumper Assembly

Accessory Code: 9DQV-801100-3000

**Features:**

- Steel Tube diameter 32mm & wall thickness 2mm
- Durable, E-coated with black powder coat
- Provides headlight protection and front protection of vehicle
- Perfectly fits on CFORCE 400 / 400 TOURING & 500 / 500 TOURING, easy to install
- Works with CFMOTO winch system and plow system



### Rear Bumper Assembly

Accessory Code: 9DQV-801300-3000

**Features:**

- Steel Tube diameter 32mm & wall thickness 2mm
- Durable, E-coated with black powder coat
- Provides taillight protection and rear protection of vehicle
- Perfectly fits on CFORCE 400 / 400 TOURING & 500 / 500 TOURING, easy to install
- Works CFMOTO hitch system



### Front Rack Extender Assembly

Accessory Code: 9DQV-802200-3000

**Features:**

- Steel Tube Diameter: φ22mm
- Durable, E-coated with black powder coat
- Perfectly fits on CFORCE 400 / 400 TOURING, easy to install
- Helps keep cargo securely in place



### Rear Rack Extender Assembly

Accessory Code: 9DQV-802300-3000

**Features:**

- Steel Tube Diameter: φ22mm
- Durable, E-coated with black powder coat
- Perfectly fits on CFORCE 400 / 400 TOURING, easy to install
- Helps keep cargo securely in place



### Rack Extender Assembly

Accessory Code: 9DRV-802400-3000

**Features:**

- Steel Tube Diameter: φ22mm
- Durable, E-coated with black powder coat
- Perfectly fits on CFORCE 500 / 500 TOURING, easy to install
- Helps keep cargo securely in place
- This extender can fit on both of front rack and rear rack



### Front Basket Assembly

Accessory Code: 9DQV-802100-3000

**Features:**

- Perfectly fit on CFORCE 400 / 400 TOURING & 500 / 500 Touring
- Large storage capacity can take 3 open face helmets
- Have 7 rope holes/handgrip holes on the basket
- Stylish look, Heavy duty plastic
- With CF Connect, Easy to install and remove, Tool-less
- Work with CFMOTO Tool Holder, can take more tools
- Need to order 4 CFConnect seats (9DQV-809100-3000) with the front basket for CFORCE 400 / 400 Touring



# CFORCE

## 400 / 400 TOURING & 500 / 500 TOURING

### Cargo Box Assembly (plastic latch)

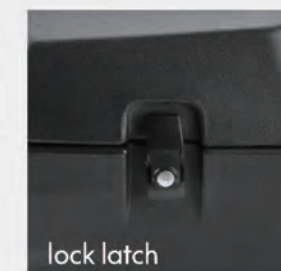
Accessory Code: 9DQV-806100-3001

### Cargo Box Assembly (lock latch)

Accessory Code: 9DQV-806100-3002

**Features:**

- Large storage capacity (26 Gallons, 100 Liters) can take 3 open face helmets
- Lockable lid, Stylish look, Heavy duty plastic
- With CF Connect, Easy to install and un-install, Tool-less
- No mounting holes inside of the cargo box, a perfect Water tight seal





**HDPE Skid Plate Assembly – 1UP**

Accessory Code: 9DQV-804100-3000

**HDPE Skid Plate Assembly – 2UP**

Accessory Code: 9CQV-804200-3000

**Features:**

- Made of high density polyethylene HDPE (thickness 8mm)
- Ultimate durability
- Offering great protection in rough terrain
- Perfectly fit on CFORCE 400 / 400 Touring & CFORCE 500 / 500 Touring

**Front Windshield Assembly**

Accessory Code: 9DQV-805100-3000

**Features:**

- Made of impact-resistant Acrylic
- Stable, quiet at low speed riding condition
- Excellent visibility, UV and weather endurance with no yellowing
- Driver wind protection
- Easy to install



**CFORCE**  
400 / 400 TOURING &  
500 / 500 TOURING

**Fender Flares Assembly**

Accessory Code: 9DQV-803100-3000

**Features:**

- Made of high strength polyethylene (thickness 2.5mm) for abrasion resistance
- Ultimate durability
- Integrated extended fender flares for full body protection from dirt and water

**Hand Guard Kit (New Royal Blue)**

Accessory Code: 9DRV-804500-3000

**Hand Guard Kit (Camo)**

Accessory Code: 9DRV-804600-3000

**Hand Guard Kit (Red)**

Accessory Code: 9DRV-804700-3000

**Hand Guard Kit (Orange)**

Accessory Code: 9DRV-804800-3000

**Features:**

- Protect driver's hands
- Hard plastic cover and plastic bracket
- Fit on CFORCE 400 / 400 Touring & CFORCE 500 / 500 Touring





## Front Bumper Assembly

Accessory Code: 9DS#-801100-6000

### Features:

- Steel Tube diameter 38mm & wall thickness 2mm
- Durable, E-coated with black powder coat
- Easy to install
- Provides front protection of vehicle
- Headlight protection
- Works with winch system and plow system



## Rear Bumper Assembly

Accessory Code: 9DS#-801200-6000

### Features:

- Steel Tube diameter 38mm & wall thickness 2mm
- Durable, E-coated with black powder coat
- Easy to install
- Provides rear protection of vehicle
- Taillight protection
- Works hitch system



## Front Windshield Assembly

Accessory Code: 9DS#-805000-6000

### Features:

- Made of impact-resistant Acrylic
- Stable, quiet at low speed riding condition
- UV and weather endurance with no yellowing
- Driver wind protection
- Excellent visibility
- Easy to install



# CFORCE 625 & 625 Touring



## Front Bumper Assembly – light protection

Accessory Code: 9DS#-801400-6000

### Features:

- Steel Tube diameter 32mm & wall thickness 2mm
- Durable, E-coated with black powder coat
- Easy to install
- Provides front protection of vehicle
- Headlight protection
- Works with winch system and plow system



## Rear Bumper Assembly – light protection

Accessory Code: 9DS#-801300-6000

### Features:

- Steel Tube diameter 32mm & wall thickness 2mm
- Durable, E-coated with black powder coat
- Easy to install
- Provides rear protection of vehicle
- Taillight protection
- Works hitch system





**Front Rack Extender Assembly - one piece**

Accessory Code: 9DS#-802300-6000

**Rear Rack Extender Assembly - one piece**

Accessory Code: 9DS#-802400-6000

**Features:**

- Integrated rack extender
- Steel Tube Diameter:  $\varnothing 22\text{mm}$
- Durable, E-coated with black powder coat
- Easy to install
- Helps keep cargo securely in place

**Front Rack Extender Assembly - separated**

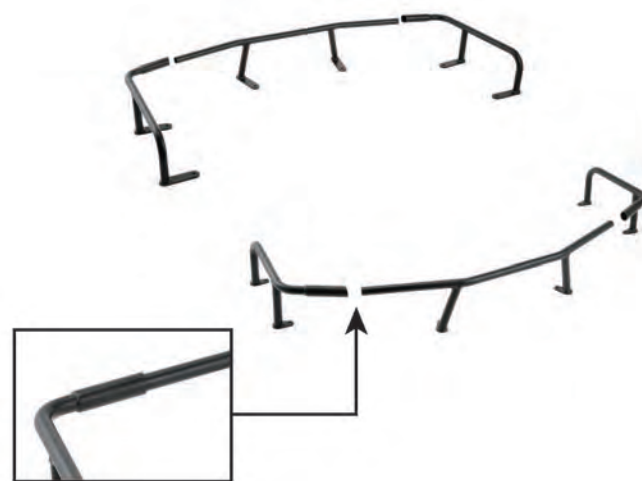
Accessory Code: 9DS#-802100-6000

**Rear Rack Extender Assembly - separated**

Accessory Code: 9DS#-802200-6000

**Features:**

- Steel Tube Diameter:  $\varnothing 22\text{mm}$
- Durable, E-coated with black powder coat
- Easy to install
- Helps keep cargo securely in place
- Small carton package save the freight cost

**HDPE Skid Plate Assembly - 2UP**

Accessory Code: 9CSV-805200-6400

**HDPE Skid Plate Assembly - 1UP**

Accessory Code: 9DSV-805300-6000

**Features:**

- Made of high density polyethylene HDPE (thickness 8mm)
- Ultimate durability
- High impact strength
- Offering great protection in rough terrain

**Aluminum Skid Plate Assembly - 2UP**

Accessory Code: 9CS#-804200-6400

**Aluminum Skid Plate Assembly - 1UP**

Accessory Code: 9DS#-804300-6000

**Features:**

- Made of high strength aluminum (thickness 5mm)
- Ultimate durability
- High impact strength
- Offering great protection in rough terrain





# CFORCE

## 625 & 625 Touring

### Front Basket Assembly

Accessory Code: 9DSV-802100-6000

#### Features:

- Perfectly fit on CFORCE 625 and CFORCE 625 Touring
- Large storage capacity can take 3 open face helmets
- Have 9 rope holes/handgrip holes on the basket
- Stylish look, Heavy duty plastic
- With CF Connect, Easy to install and remove, Tool-less
- Work with CFMOTO Tool Holder, can take more tools



### Cargo Box Assembly (plastic latch)

Accessory Code: 9DSV-806100-6001

### Cargo Box Assembly (lock latch)

Accessory Code: 9DSV-806100-6002

#### Features:

- Large storage capacity (24 Gallons, 90 Liters) can take 2 open face helmets and 1 full face helmet
- Lockable lid, Stylish look, Heavy duty plastic
- With CF Connect, Easy to install and un-install, Tool-less
- No mounting holes inside of the cargo box, a perfect Water tight seal



### Cargo Box Assembly (plastic latch)

Accessory Code: 9DSV-806100-6003

### Cargo Box Assembly (lock latch)

Accessory Code: 9DSV-806100-6004

#### Features:

- Large storage capacity (24 Gallons, 90 Liters) can take 2 open face helmets and 1 full face helmet
- Lockable lid, Stylish look, Heavy duty plastic
- With CF Connect, Easy to install and un-install, Tool-less
- No mounting holes inside of the cargo box, a perfect Water tight seal





# CFORCE

## 850 XC & 1000



### Front Windshield Assembly

Accessory Code: 9AW#-806000-2100

#### Features:

- Made of impact-resistant Acrylic
- Stable, quiet at low/speed riding condition
- UV and weather endurance with no yellowing
- Driver wind protection
- Excellent visibility
- Easy to install



### Front Bumper Assembly – Overland

Accessory Code: 9AW#-801100-2000

#### Features:

- Steel Tube diameter 38mm & wall thickness 2mm
- Durable, E-coated with black powder coat
- Easy to install
- Provides front protection of vehicle
- Headlight protection
- Anti-corrosion coating with durable coat finish
- Works with winch system and plow system



### Rear Bumper Assembly – Overland

Accessory Code: 9AW#-801200-2000

#### Features:

- Steel Tube diameter 38mm & wall thickness 2mm
- Durable, E-coated with black powder coat
- Easy to install
- Provides rear protection of vehicle
- Taillight protection
- Anti-corrosion coating with durable coat finish
- Works hitch system



### Front Rack Extender Assembly

Accessory Code: 9AW#-802300-2000

### Rear Rack Extender Assembly

Accessory Code: 9AW#-802400-2000

#### Features:

- Integrated rear rack extender
- Steel Tube Diameter:  $\varnothing$ 22mm
- Durable, E-coated with black powder coat
- Easy to install
- Helps keep cargo securely in place



### Front Bumper Assembly – Light Protection

Accessory Code: 9AWA-800100

#### Features:

- Steel Tube diameter 35mm & wall thickness 2mm
- Durable, E-coated with black powder coat
- Easy to install
- Provides front protection of vehicle
- Headlight protection
- Anti-corrosion coating with durable coat finish
- Works with winch system and plow system



### Rear Bumper Assembly – light protection

Accessory Code: 9AWA-800200

#### Features:

- Steel Tube diameter 35mm & wall thickness 2mm
- Durable, E-coated with black powder coat
- Easy to install
- Provides rear protection of vehicle
- Taillight protection
- Anti-corrosion coating with durable coat finish
- Works hitch system



# CFORCE 850XC & 1000



## Nerf Bars Assembly

Accessory Code: 9AWA-800300

### Features:

- Steel Tube diameter 30mm & wall thickness 2mm
- Durable, E-coated with black powder coat
- Easy to install
- Provides side protection of vehicle
- Anti-corrosion coating with durable coat finish



## Aluminum Winch Armor Assembly

Accessory Code: 9AWA-800400

### Features:

- Made of high strength aluminum (thickness 3mm)
- Ultimate durability
- High impact strength
- Offering great protection for winch



## Aluminum Skid Plate Assembly

Accessory Code: 9AWA-800500

### Features:

- Made of high strength aluminum (thickness 3mm)
- Ultimate durability
- High impact strength
- Offering great protection in rough terrain



# CFORCE

## 850 XC & 1000



## A-arm Protector Assembly

Accessory Code: 9AWA-800600

### Features:

- Made of high strength aluminum (thickness 3mm)
- Ultimate durability
- High impact strength
- Offering great protection for A-arms in rough terrain



## Rear Cargo Box Assembly

Accessory Code: 9AYV-806100-2A00

### Features:

- Large storage capacity (30 Gallons, 115 Liters) can take 4 open face helmets
- Lockable lid, Stylish look, Heavy duty plastic
- Water tight seal
- With CF Connect, Easy to install and un-install, Tool-less
- Fit on CFORCE 850 XC & CFORCE 1000 perfectly



## Center Cargo Box Assembly

Accessory Code: 9AYV-806200-2A00

### Features:

- Large storage capacity (15.8 Gallons, 60 Liters)
- Lockable lid
- With CF Connect, Easy to install and un-install, Tool-less
- Stylish look
- Heavy duty plastic
- Fit on CFORCE 850 XC & CFORCE 1000 perfectly
- No mounting holes inside of cargo box, a perfect Water tight seal







## Vehicle Cover

Accessory Code: 85204Z-00600

### Features:

- Made of UV-resistant solution black yarn-dyed Oxford PU
- Protects windshield and colored panels from abrasion
- Weather-resistant trailering cover protects your vehicle during storage and transportation
- Perfectly fit CFORCE 850 XC and 1000 with or without CFMOTO accessories



## Hand Guard Assembly With Fairing

Accessory Code: 9AYV-805100-2A00

### Features:

- Integrated hand guard protect driver's hands
- Hard plastic cover with a small windshield
- Fit on CFORCE 850 XC & CFORCE 1000 perfectly



# CFORCE 850 XC & 1000



## 14" Front Wheel Assembly – U.S. standard

Accessory Code: 9AYV-807100-2A00

### Features:

- New type 14" Rim,
- New type 27" Tire, for U.S. standard only. Not for Europe Standard.
- Beadlock for 14" Rim
- Fit on CFORCE 850 XC & CFORCE 1000 perfectly



## 14" Rear Wheel Assembly – U.S. standard

Accessory Code: 9AYV-807200-2A00

### Features:

- New type 14" Rim
- New type 27" Tire, for U.S. standard only. Not for Europe Standard.
- Beadlock for 14" Rim
- Fit on CFORCE 850 XC & CFORCE 1000 perfectly



## HDPE Skid Plate Assembly

Accessory Code: 9AWV-804100-2000

### Features:

- Made of high density polyethylene HDPE (thickness 8mm)
- Ultimate durability
- High impact strength, Ultimate durability
- Offering great protection in rough terrain
- Fit on CFORCE 850 XC & CFORCE 1000 perfectly



## A-arm Protector Assembly

Accessory Code: 9AWV-804200-2000

### Features:

- Made of high strength aluminum (thickness 5mm)
- Painting Black
- Ultimate durability
- Offering great protection for A-arms in rough terrain







# CFORCE UNIVERSAL

## Canvas Storage Bag

Accessory Code: 9DS#-809200-6000

### Features:

- Transport gear in a weatherproof bag
- IPX4 waterproof
- Large capacity 99L
- Designed to maximize potential storage
- Extra compartments on top to store goods



## Passenger Gauntlet Assembly

Accessory Code: 85214G-00001

### Features:

- Outer made of Canvas, Inside made of polyester fiber
- Keep passenger's hands warm in the cold weather
- With Velcro and snap-fit, easy to install and remove



## Passenger Infill Rack Assembly

Accessory Code: 9DSV-803100-6000

### Features:

- Passenger infill rack extend the loading capacity of ATV
- Built a big flat rear rack for taking big items.
- With CF Connect mounting holes, more accessories can be installed on the rack easily.
- Easy to install and remove, Tool-less



## Tools Box Assembly

Accessory Code: 5BYV-804100-1000

### Features:

- Tool box can take the necessary tools and small items
- Use Velcro to lock the tool box on vehicle, easy to change the place
- With tool box, consumer can get the tool anytime and anywhere.
- L x W x H: 422 x 170 x 57mm (16.6 x 6.9 x 2.2 inch)



## CFMOTO Tool Support, Pair

Accessory Code: 852114-00001

### Features:

- Tool Holder FlexGrip™ by ATV-TEK with CFConnect™ system
- A true custom fit for your lifestyle, use it for guns, bows, tools, or any other item.
- CFMOTO riders have effortless installation and versatility thanks to a finger adjustable rotation of the grip and convenient mounting options with CFConnect™



## Heated Grips & Thumb Throttle Assembly

Accessory Code: 9DQV-808100-3000



## CFConnect Clamp, Fair

Accessory Code: 9DS#-809000-6000



## Whip Flag

Accessory Code: 9DSV-807100-6000

## Whip Flag

Accessory Code: 9DSV-807200-6000

### Features:

- Make sure everyone knows what you are riding
- Perfect for the dunes and new riders
- 7.5-ft.(2.3m) length
- Includes flag mount
- 9DSV-807100-6000 apply to CFMOTO CFORCE 400 / 400 Touring & CFORCE 500 / 500 Touring and Youth ATV.
- 9DSV-807200-6000 apply to CFMOTO CFORCE 625 / 625 Touring & CFORCE 850 XC / 1000.



# UNIVERSAL



# CFMOTO TOWING

## Winch Rope Fairlead

Accessory Code: 7030-150701

### Features:

- Used with CFMOTO winch
- Aluminum fairlead reduces wear on wire rope for heavy attachment application



## Synthetic Winch Rope

Accessory Code: 7020-800750

### Features:

- High strength winch rope, pull up to 4500 lbs
- Rope length up to 12 meters.
- Light weight, easy to carry
- Durable, sea water resistance, UV resistance and temperature difference repetition, etc
- Convenient, fast and safe operation



## Tree Saver Strap

Accessory Code: 9DS#-808302-6000

### Features:

- Large eyes with heavy duty chafe protection allow for easy rigging
- Bright yellow nylon provide excellent visibility when winching
- Center chafe protects from abrasion damage



## Hitch Kit (2", 136mm)

Accessory Code: 7000-808100

### Features:

- 2 inch hitch kit for ATV/UTV
- 136mm length towing bar (from pin shaft hole to hitch ball hole)
- Easy to install and remove
- E-coated with black powder coat



## Hitch Kit (2", 290mm)

Accessory Code: 9AW#-808100

### Features:

- 2 inch hitch kit for ATV/UTV
- 290mm length towing bar (from pin shaft hole to hitch ball hole)
- Easy to install and remove
- E-coated with black powder coat



## Converting Cable, Socket Assembly

Accessory Code: 7020-800200-1000

### Features:

- Use for all CFMOTO vehicle with trailer
- The socket cover defense against dirt and water
- Power socket is for trailer in most markets, added Adaptor is for North America Market





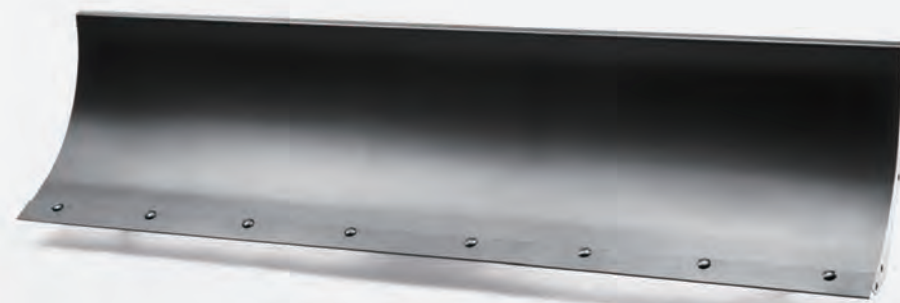
# CFORCE SNOW PLOW

## 60" Plow Blade Assembly

Accessory Code: 9AWV-804300-2000

### Features:

- Plow wall thickness 2.5mm
- Attach the plow push tube at the front of CFMOTO vehicle easily
- Increased sacrifice anodes for longer use of snow plows
- E-coated with black powder coat
- Make the job easier with the right tools, clear long alleys and make the task easier by sending the snow further out of the way.



## 72" Plow Blade Assembly

Accessory Code: 5HYV-804300-1000

### Features:

- Plow wall thickness 2.5mm
- Attach the plow push tube at the front of CFMOTO vehicle easily
- Increased sacrifice anodes for longer use of snow plows
- E-coated with black powder coat
- Make the job easier with the right tools, clear long alleys and make the task easier by sending the snow further out of the way.



## Plow Fenders, Pair

Accessory Code: 5HYV-804400-1000

### Features:

- For CFMOTO plow, Sold in pairs
- Wall Thickness: 3mm
- Install on CFMOTO plow system easily
- E-coated with black powder coat



## Plow Mount Bracket Assembly

Accessory Code: 9AYV-804200-2000

### Features:

- For CFORCE 850 XC & CFORCE 1000
- Wall Thickness: 6mm
- Install on the front of CFMOTO vehicle easily and lock the plow push tube easily
- Increased sacrifice anodes for longer use of snow plows
- E-coated with black powder coat



## Plow Mount Bracket Assembly

Accessory Code: 9DSV-804100-6000

### Features:

- For CFORCE 400 / 400TOURING & 500 / 500TOURING & CFORCE 625 & 625 Touring
- Wall Thickness: 6mm
- Install on the front of CFMOTO vehicle easily and lock the plow push tube easily
- Increased sacrifice anodes for longer use of snow plows
- E-coated with black powder coat



## Plow Markers, Pair

Accessory Code: 5HYV-806400-1000

### Features:

- For CFMOTO plow, Sold in pairs
- Height: 75mm (29.5 inch)
- Bright orange color, help locate the edges of plow
- Install on CFMOTO plow system easily



## Plow Push Tube Assembly

Accessory Code: 5HYV-804200-1000

### Features:

- For CFMOTO plow
- Plow wall thickness 5mm
- Attach the plow mount bracket at the front of CFMOTO vehicle easily
- Increased sacrifice anodes for longer use of snow plows
- E-coated with black powder coat







| REF | PRODUCT NAME    | PRODUCT CODE | POWER | STARTING | STANARDED |              |
|-----|-----------------|--------------|-------|----------|-----------|--------------|
| 1   | GENERATOR - i20 | 852100-00004 | 2.0kw | Recoil   | EUROPE    | 230volt/50Hz |
| 2   |                 | 852100-00005 |       |          | U.S.      | 120volt/60Hz |
| 3   |                 | 852100-00034 |       |          | Canada    | 120volt/60Hz |
| 4   |                 | 852100-00006 |       |          | Australia | 230volt/50Hz |
| 5   |                 | 852100-00019 |       |          | China     | 230volt/50Hz |
| 6   |                 | 852100-00024 |       |          | Korean    | 220volt/60Hz |
| 7   | GENERATOR - i25 | 852100-00007 | 2.4kw | Recoil   | EUROPE    | 230volt/50Hz |
| 8   |                 | 852100-00008 |       |          | U.S.      | 120volt/60Hz |
| 9   |                 | 852100-00035 |       |          | Canada    | 120volt/60Hz |
| 10  |                 | 852100-00009 |       |          | Australia | 230volt/50Hz |
| 11  |                 | 852100-00020 |       |          | China     | 230volt/50Hz |
| 12  |                 | 852100-00025 |       |          | Korean    | 220volt/60Hz |
| 13  | GENERATOR - i30 | 852100-00010 | 3.0kw | Recoil   | EUROPE    | 230volt/50Hz |
| 14  |                 | 852100-00011 |       |          | U.S.      | 120volt/60Hz |
| 15  |                 | 852100-00036 |       |          | Canada    | 120volt/60Hz |
| 16  |                 | 852100-00012 |       |          | Australia | 230volt/50Hz |
| 17  |                 | 852100-00021 |       |          | China     | 230volt/50Hz |
| 18  |                 | 852100-00026 |       |          | Korean    | 220volt/60Hz |



| REF | PRODUCT NAME    | PRODUCT CODE | POWER | STARTING | STANARDED |              |
|-----|-----------------|--------------|-------|----------|-----------|--------------|
| 1   | GENERATOR - i20 | 852000-00004 | 2.0kw | Recoil   | EUROPE    | 230volt/50Hz |
| 2   |                 | 852000-00005 |       |          | U.S.      | 120volt/60Hz |
| 3   |                 | 852000-00006 |       |          | Australia | 120volt/60Hz |
| 4   |                 | 852000-00019 |       |          | China     | 230volt/50Hz |
| 5   |                 | 852000-00024 |       |          | Korean    | 220volt/60Hz |
| 6   |                 | 852000-00007 |       |          | EUROPE    | 230volt/50Hz |
| 7   | GENERATOR - i25 | 852000-00008 | 2.4kw | Recoil   | U.S.      | 120volt/60Hz |
| 8   |                 | 852000-00009 |       |          | Australia | 120volt/60Hz |
| 9   |                 | 852000-00020 |       |          | China     | 230volt/50Hz |
| 10  |                 | 852000-00025 |       |          | Korean    | 220volt/60Hz |
| 11  |                 | 852000-00010 |       |          | EUROPE    | 230volt/50Hz |
| 12  |                 | 852000-00011 |       |          | U.S.      | 120volt/60Hz |
| 13  | GENERATOR - i27 | 852000-00012 | 3.0kw | Recoil   | Australia | 120volt/60Hz |
| 14  |                 | 852000-00021 |       |          | China     | 230volt/50Hz |
| 15  |                 | 852000-00026 |       |          | Korean    | 220volt/60Hz |

| REF | PRODUCT NAME     | PRODUCT CODE | POWER | STARTING                       | STANARDED |              |
|-----|------------------|--------------|-------|--------------------------------|-----------|--------------|
| 1   | GENERATOR - i45  | 852100-00013 | 4.5kw | Recoil                         | EUROPE    | 230volt/50Hz |
| 2   |                  | 852100-00014 |       |                                | U.S.      | 120volt/60Hz |
| 3   |                  | 852100-00037 |       |                                | Canada    | 120volt/60Hz |
| 4   |                  | 852100-00015 |       |                                | Australia | 230volt/50Hz |
| 5   |                  | 852100-00022 |       |                                | China     | 230volt/50Hz |
| 6   |                  | 852100-00027 |       |                                | Korean    | 220volt/60Hz |
| 7   | GENERATOR - i45E | 852100-00016 | 4.5kw | Recoil/<br>Electric/<br>Remote | EUROPE    | 230volt/50Hz |
| 8   |                  | 852100-00017 |       |                                | U.S.      | 120volt/60Hz |
| 9   |                  | 852100-00038 |       |                                | Canada    | 120volt/60Hz |
| 10  |                  | 852100-00018 |       |                                | Australia | 230volt/50Hz |
| 11  |                  | 852100-00023 |       |                                | China     | 230volt/50Hz |
| 12  |                  | 852100-00028 |       |                                | Korean    | 220volt/60Hz |



| REF | PRODUCT NAME     | PRODUCT CODE | POWER | STARTING                       | STANARDED |              |
|-----|------------------|--------------|-------|--------------------------------|-----------|--------------|
| 1   | GENERATOR - i45  | 852000-00013 | 4.5kw | Recoil                         | EUROPE    | 230volt/50Hz |
| 2   |                  | 852000-00014 |       |                                | U.S.      | 120volt/60Hz |
| 3   |                  | 852000-00015 |       |                                | Australia | 120volt/60Hz |
| 4   |                  | 852000-00022 |       |                                | China     | 230volt/50Hz |
| 5   |                  | 852000-00027 |       |                                | Korean    | 220volt/60Hz |
| 7   |                  | 852000-00016 |       |                                | EUROPE    | 230volt/50Hz |
| 8   | GENERATOR - i45E | 852000-00017 | 4.5kw | Recoil/<br>Electric/<br>Remote | U.S.      | 120volt/60Hz |
| 9   |                  | 852000-00018 |       |                                | Australia | 120volt/60Hz |
| 10  |                  | 852000-00023 |       |                                | China     | 230volt/50Hz |
| 11  |                  | 852000-00028 |       |                                | Korean    | 220volt/60Hz |

